

Red Palm Mite

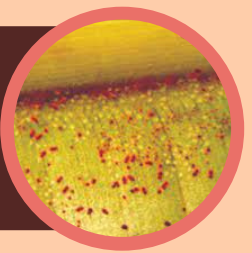
ORIGIN

Red palm mite is also known as *Raoiella indica* Hirst (acari: Tenuipalpidae) is native to Eastern Hemisphere - Egypt, India, Iran, Israel, Mauritius, Pakistan, Sri Lanka and Sudan.

This plant pest is a pest of coconut, areca palm and date palm.

INTRODUCTION

Photo credit: GuyanaTimes



INVASION

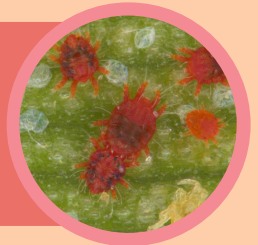
Photo credit: Bioone.org

The red palm mite is able to spread through infested plants or plant material. Seed coconuts and handicraft (hats, bowls, etc) have been found to harbour live mites and viable eggs.

The mite could be an enormous threat to the ornamental palm industry as well as banana, coconut, and date production.

IMPACT

Photo credit: National Research Centre for Banana



ADDITIONAL INFORMATION

Photo credit: Cardi.org

The mites are usually found on the underside of leaves, often in large groups of hundreds of individuals, and are visible to the naked eye.

Red palm mite is currently present in Saint Lucia and Dominica, Trinidad, Guadeloupe, Jamaica and Grenada and other countries.

Learn more about this plant pest from our website:
<https://caribbeaninvasives.org/>