

PREVENT
Invasives
in the **CARIBBEAN**

SPATHODEA

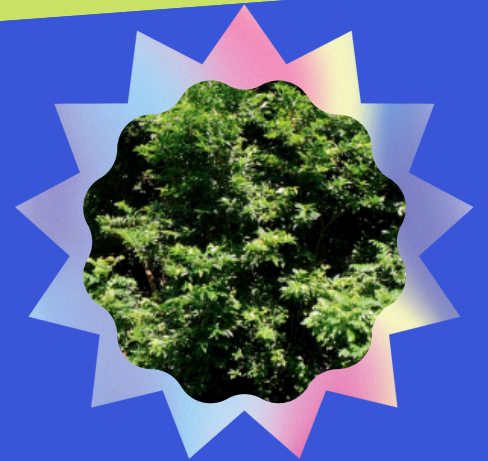
CAMPANULATA P.BEAUV

Spathodea campanulata P. Beauv also known as Nandi flame, Nile flame or tulip tree is native to parts of Africa.



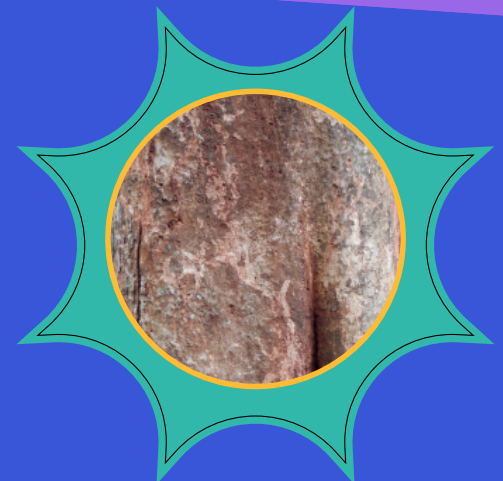
Spathodea campanulata P. Beauv was first introduced for the purpose of bee foraging, medicine, carving, and fuelwood.

S. campanulata P. Beauv reduces biodiversity and displaces many native plants due to the shading effects of the tree's large leaves.



Spathodea campanulata P. Beauv likes to invade riparian areas, forest edges/gaps, disturbed land, and roadsides.

In Cuba, *Spathodea campanulata* P. Beauv is a serious threat to the integrity and productivity of the country's ecosystem.



Spathodea campanulata P. Beauv is currently present on many Caribbean islands, it has only been recorded as invasive in the Bahamas, Cuba, Dominican Republic, Jamaica, Puerto Rico, US Virgin Islands, and St Lucia.