



Invasive Alien Species



Cane Toad aka Marine Toad (*Rhinella marina* formerly *Bufo marinus*)

©Lisa Gorospe

©Lisa Gorospe

- Many suspected toads turn out to be harmless native frogs, so it is important to correctly identify them.
- Cane toads will NOT be found on walls, windows, and do not climb trees; they like to be around homes and near fresh or brackish water during breeding times.

Adult Cane Toads

Male -Rough bumpy back spine skin.

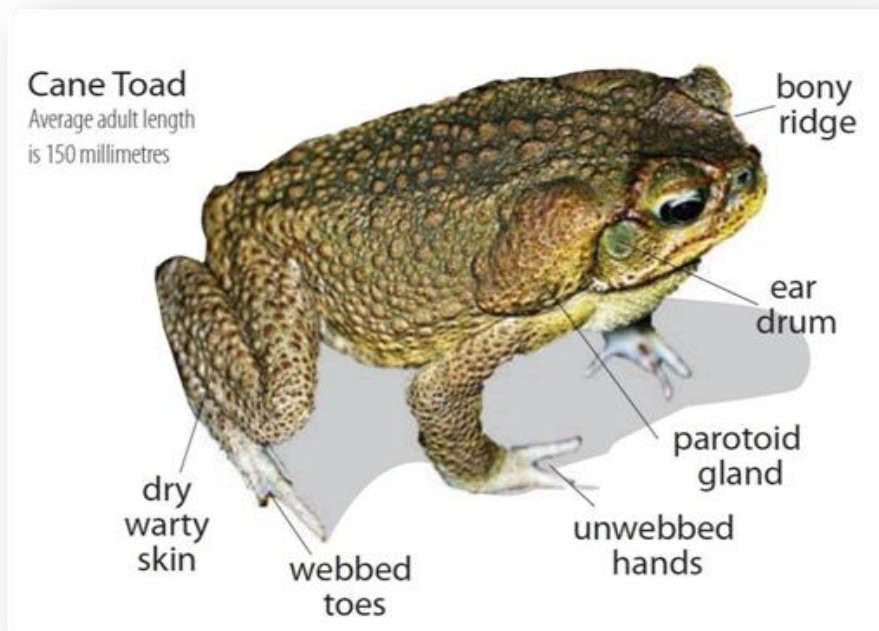
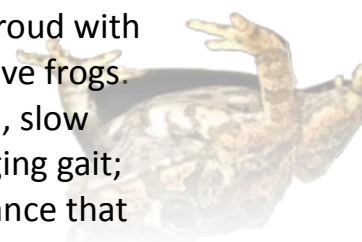
Female- Smoother back spine skin; generally larger than male.

Color- dull brown to yellowish or blackish (never bright greens). The under parts are usually a dirty cream color and juvenile toads have a grey and cream marbled pattern that is lost with age.

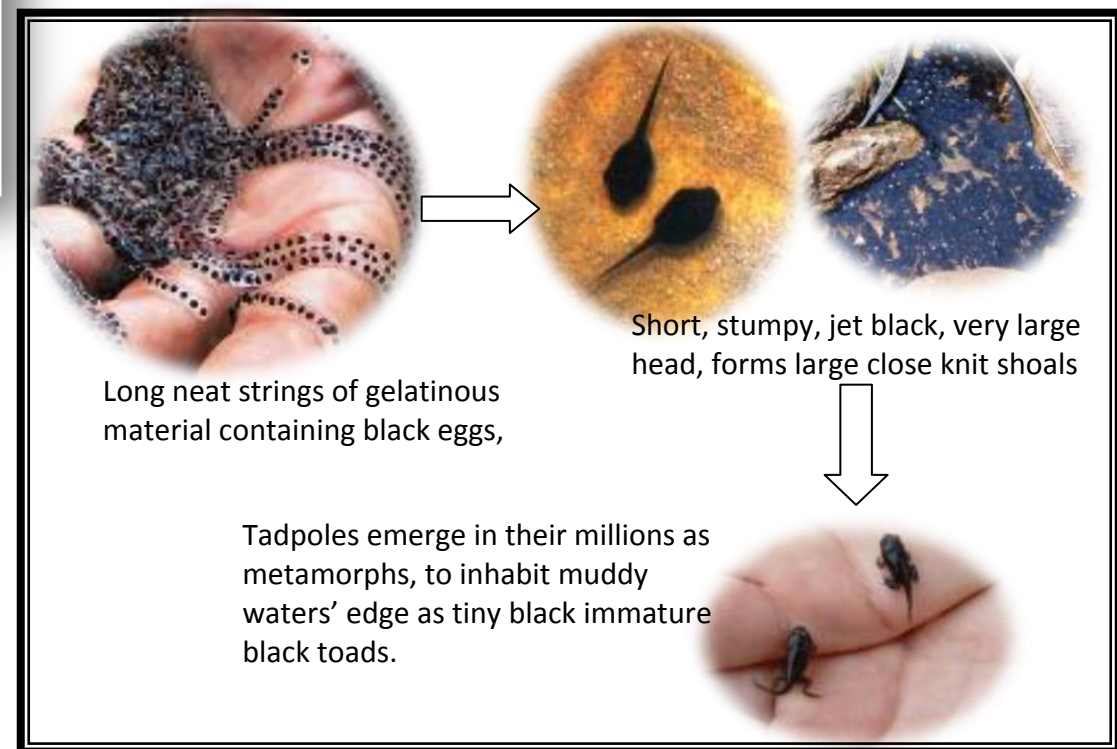


Behavioral Patterns

Cane toads are often seen sitting up proud with a more upright posture than most native frogs. The cane toads are often easy to catch, slow hopping, not a quick, sudden or springing gait; cannot jump relative body length distance that native frogs jump.



Cane Toad
Average adult length is 150 millimetres



©Lisa Gorospe

WHAT TO DO IF YOU THINK YOU FIND A CANE TOAD?

If you are 100% sure it is a cane toad, kill on sight and report to Bahamas National Trust. The most humane way is to use a plastic bag to pick up, double the bag, tightly seal and place overnight in a freezer. Photograph & bury the toad the following morning.

- DO NOT TAKE RELOCATE CANE TOADS
- DO NOT ATTEMPT TO SELL TO PET SHOPS
- DO NOT TRY TO COLLECT A PAIR: MALE AND FEMALE

If you or your pet is exposed to toad venom first aid treatment includes irrigating (flushing with water) the eyes, mouth and nose. Seek medical attention if symptoms persist.

If toxin is squirted into the mouth, immediately flush the mouth with water and take the patient to the emergency department of the nearest hospital.

When swallowed, the toxin may affect the heart, blood pressure and breathing, and cause paralysis, salivation, twitching and vomiting, with death being possible in severe cases through cardiac arrest, sometimes within 15 minutes.

REPORT THE LOCATION OF THE SIGHTING TO THE BNT (393-1317), THE DEPARTMENT OF AGRICULTURE (325-7502) OR THE BEST COMMISSION (322-4546). TAKE A PICTURE AND EMAIL TO: CANETOAD@BNT.BS

